



Since 1972

# Manual Water Meter SAMM 220



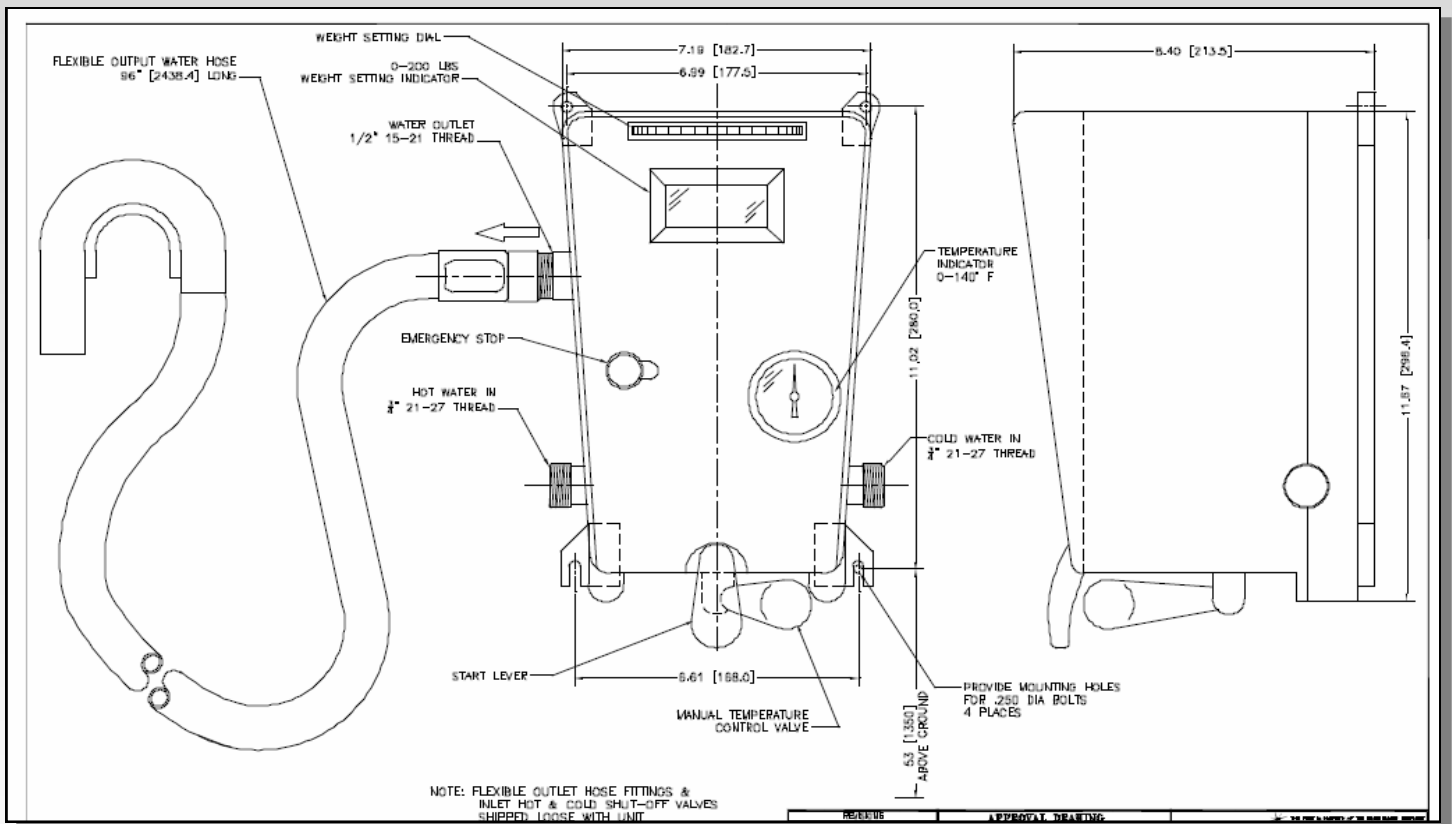
## Specifications

- Wall mounted unit, five feet above floor level
- Unit dimensions: W 7" X H 11" X D 6"
- Hot 3/4" inlet water line connection
- Cold 3/4" inlet water line connection
- Incoming water pressure should be regulated from 30 PSI minimum to 85 PSI maximum
- Outlet 1/2" water line connection
- No electrical connection required

## Features

- Notched wheel for setting dosing amount on graduated dial (1# to 220#)
- Emergency cut off lever
- Water temperature gauge
- Dosing start lever
- Manual temperature mixing valve lever
- Unit supplied with 8 foot water hose line with swan neck connection for hanging to mixing bowl

**\*\*NOTE\*\*** Local codes may require on/off Dosing nozzle at the end of hose



In an effort to consistently upgrade our products, we reserve the right to change specifications and dimensions without notice.

Creative Technology and Service for the Baking Industry

### Gemini Bakery Equipment Company

9990 Gantry Road  
Philadelphia, PA 19115-1002  
(215) 673-3520 Fax: (215) 673-3944  
sales@geminibe.com  
www.geminibe.com



em September 2016